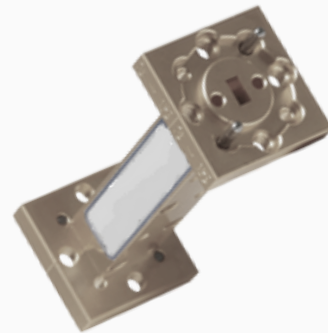


# RF MESH FILTERS

## For Passive Waveguide Components

SURON's Mesh Filters are found in passive waveguide components, such as directional couplers, band pass filters, frequency multipliers, and more. We also produce shims for calibration kits of Network Analyzers (VNA)



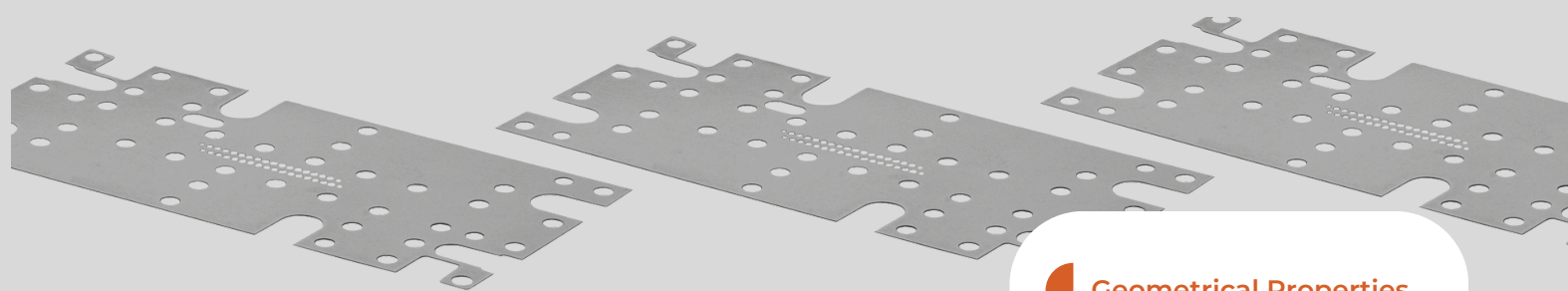
2024



**SURON**  
Precision Solutions

# RF MESH FILTERS

## For Passive Waveguide Components



SURON's Mesh Filters and Calibration Shims for passive waveguide components cover frequencies starting from several GHz and up to 1.1 THz in mm-wave and terahertz applications

MM-wave and terahertz applications include high-speed wireless communication (GHz Wi-Fi), frequency mixers, spectrum analyzers, and testing equipment for 5G & emerging 6G networks.

### Geometrical Properties

- Metal thicknesses-down to 0.013mm [.0005"]
- Min. aperture:  $\varnothing$  0.020mm [.0008"]
- Min tolerance:  $\pm$  0.005mm [.0002"]

### Other Properties

- Burr free
- Cross-section cutting line, straight & parallel walls

### Materials

- Stainless Steel (AISI 300 series)
- Copper Alloys (CuBe2)
- Nickel Alloys (NiCo5 Electroforming)

### Platings

- Soft Gold (99.9% Au)
- Hard Gold (99.7% Au, 0.3% Co)
- Palladium
- Silver
- Nickel

Suron's major advantage is the unique ability to manufacture with a wide array of metal types on thin sheets, with extreme precision

